



---

# LESSON 3:

## TAKING A REST

---

# LESSON 3:

## Taking A Rest

### In This Lesson:

*In this lesson you'll learn about rests and how to play them and count them. A lot of people will say that what you leave out is as important (if not more important) than what you play.*

So if that's the case, this lesson will be extra important because we cover something called a rest. Every type of note has a corresponding rest that lasts for the same amount of time.

So we have whole rests that last for a whole measure (for now,) half rests that last for 2 beats, quarter rests that last for 1 beat, and eighth rests that last for  $\frac{1}{2}$  beat.



This next example is going to be really easy to play...

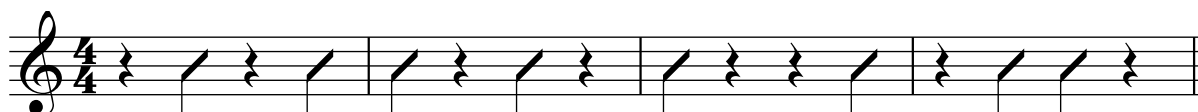
### Example 3-1



### Example 3-2



### Example 3-3



Eighth note rests can be a little tricky. Usually they happen as the 1st of the 1/8th note pair and it looks like this reggae style example

**Example 3-4**

Example 3-4 shows two staves of musical notation in 4/4 time. The first staff features two measures. The first measure has a C chord diagram (x02321) above it, and the second measure has an Em chord diagram (022000) above it. The rhythm consists of eighth notes with eighth note rests at the beginning of each pair. The second staff also features two measures. The first measure has an Am chord diagram (x02020) above it, and the second measure has a G chord diagram (023200) above it. The rhythm is similar to the first staff, with eighth notes and eighth note rests at the beginning of each pair.

Or something like this where we are using the most popular strum in the world and using the 1/8th note rest to add emphasis at the end of a phrase

**Example 3-5**

Example 3-5 shows two staves of musical notation in 4/4 time. The first staff features two measures. The first measure has a G chord diagram (023200) above it, and the second measure has a C chord diagram (x02321) above it. The rhythm consists of eighth notes with eighth note rests at the beginning of each pair. The second staff also features two measures. The first measure has a G chord diagram (023200) above it, the second measure has a D chord diagram (xx0232) above it, and the third measure has a G chord diagram (023200) above it. The rhythm consists of eighth notes with eighth note rests at the beginning of each pair, ending with a diamond symbol.