



# LESSON 1:

## STRUMMING FUNDAMENTALS

# LESSON 1:

## Strumming Fundamentals

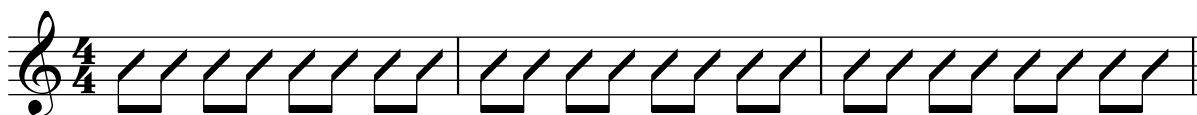
### In This Lesson...

*In this lesson we'll cover some basics of strumming and how they are written and executed.*

#### Example 1-1

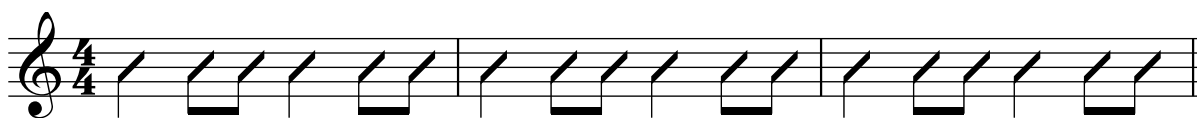


#### Example 1-2



I use the syllables a lot of times like “quar-ter” for a quarter note and “eighth note” for an eighth not pair. As long as you say things in time, you’ll play them in time.

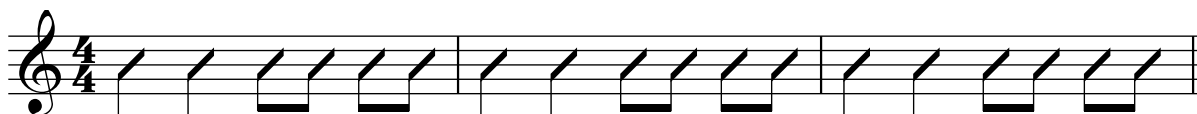
#### Example 1-3



#### Example 1-4



#### Example 1-5



Sometimes we'll extend things out the other way.

In that case, if you double a quarter note you have a half note. Yes, you really do miss the strings 3 times if you do one of these.

Remember for these that every beat=2 strums (a down strum and an up strum.) By doing that you let your right arm keep the time for you.

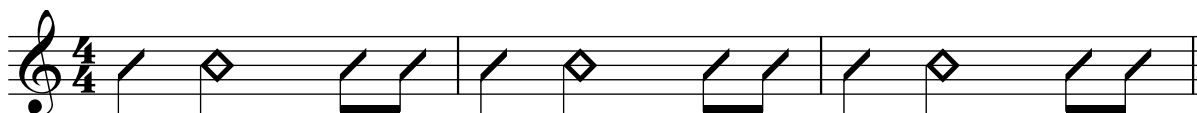
### Example 1-6



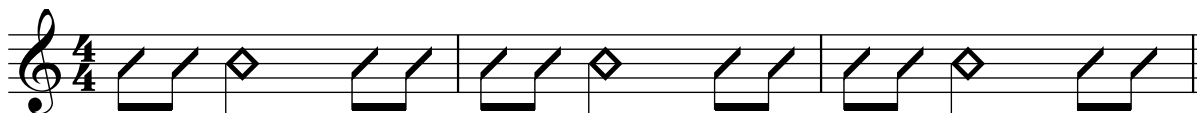
### Example 1-7



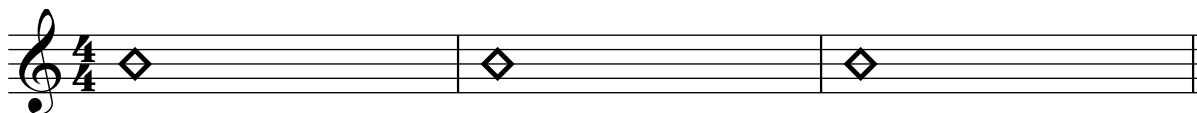
### Example 1-8



### Example 1-9



### Example 1-10



## Example 1-11

Example 1-11 is a musical exercise in 4/4 time, consisting of four staves of guitar chords and strumming patterns. The notation includes chord diagrams and corresponding rhythmic notation on a treble clef staff.

**Staff 1:**

- Chord 1: G (Major). Diagram: 3rd fret low E, 2nd fret D, 3rd fret B, 3rd fret G.
- Chord 2: D (Major). Diagram: 2nd fret low E, 2nd fret D, 3rd fret B, 3rd fret G.
- Chord 3: C (Major). Diagram: 3rd fret low E, 2nd fret D, 3rd fret B, 3rd fret G.

**Staff 2:**

- Chord 1: G (Major). Diagram: 3rd fret low E, 2nd fret D, 3rd fret B, 3rd fret G.
- Chord 2: G7 (Dominant Seventh). Diagram: 3rd fret low E, 2nd fret D, 3rd fret B, 3rd fret G, 3rd fret F.
- Chord 3: C (Major). Diagram: 3rd fret low E, 2nd fret D, 3rd fret B, 3rd fret G.
- Chord 4: G (Major). Diagram: 3rd fret low E, 2nd fret D, 3rd fret B, 3rd fret G.

**Staff 3:**

- Chord 1: Am (Minor). Diagram: 3rd fret low E, 2nd fret D, 3rd fret B, 3rd fret G.
- Chord 2: D7 (Dominant Seventh). Diagram: 2nd fret low E, 2nd fret D, 3rd fret B, 3rd fret G, 3rd fret F.

**Staff 4:**

- Chord 1: G (Major). Diagram: 3rd fret low E, 2nd fret D, 3rd fret B, 3rd fret G.
- Chord 2: C (Major). Diagram: 3rd fret low E, 2nd fret D, 3rd fret B, 3rd fret G.
- Chord 3: Cm (Minor). Diagram: 3rd fret low E, 2nd fret D, 3rd fret B, 3rd fret G, 3rd fret F.
- Chord 4: G (Major). Diagram: 3rd fret low E, 2nd fret D, 3rd fret B, 3rd fret G.